



OEM BOOK

Disposable Ear Piercers / Sterile Piercing Studs

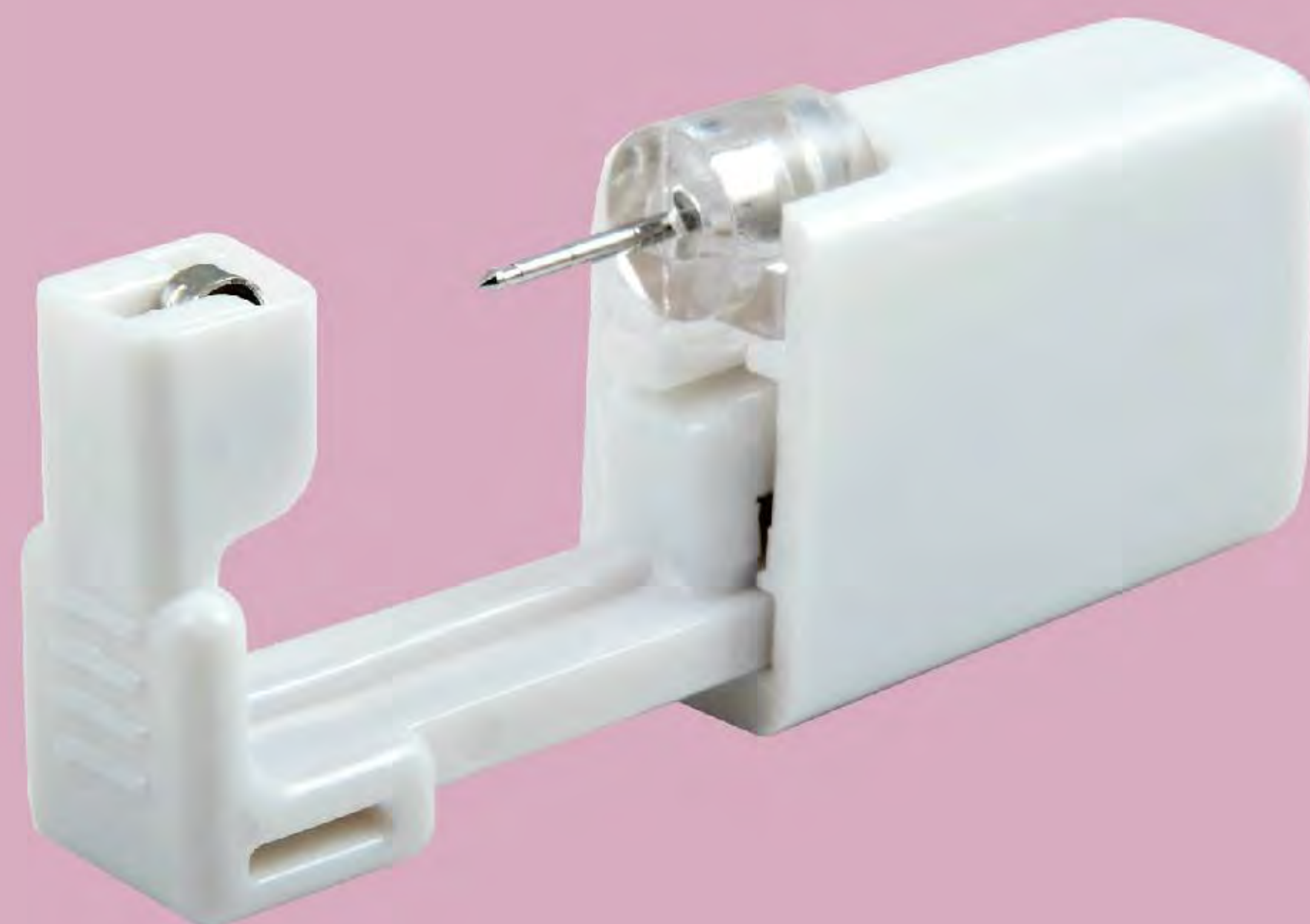
Profession



Made in 100000 class cleanroom



Sterilized by EO Gas



All studs meet EU
Nickle-Release Regulation

Made of 316
stainless steel



Vacuum Gold plating

0.8mm thin post,
minimized pain

Dupont Tyvek
Fabric ensure 5 years
shelf life

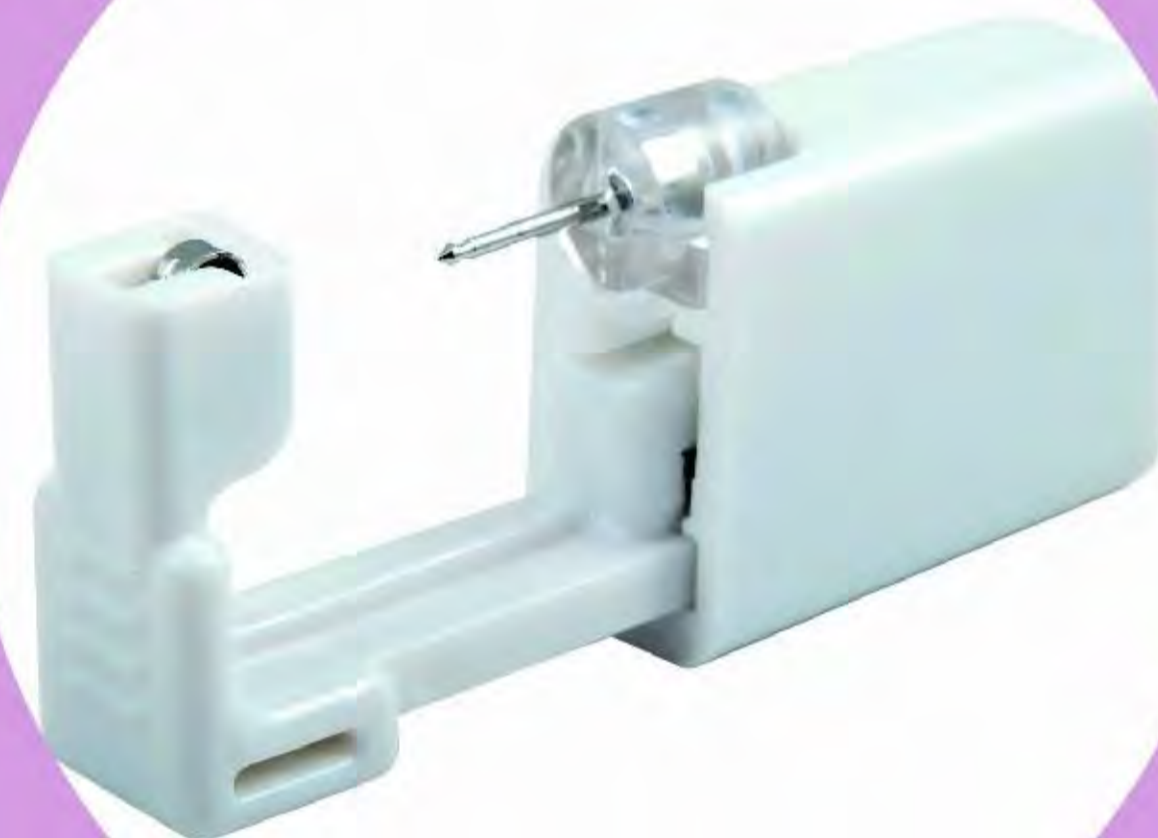
EO sterilization mark:
the dot will be BROWN
after sterilization
(origin colour BLUE)





OEM BOOK

Disposable Ear Piercers/Sterile Piercing Studs



**Modified from the most popular ear piercer in the world
With hundreds of stud options**

1 Option of Open Spring Wire



Auto open stud holders
Prevent stud holder from dropping on the floor

2 Option of Sterile Pack



Smaller
Less transport cost



Vertical pack
Work with Push Gun

3 Option of Packages



box of one pair plus After Piercing Lotion



box of one pair



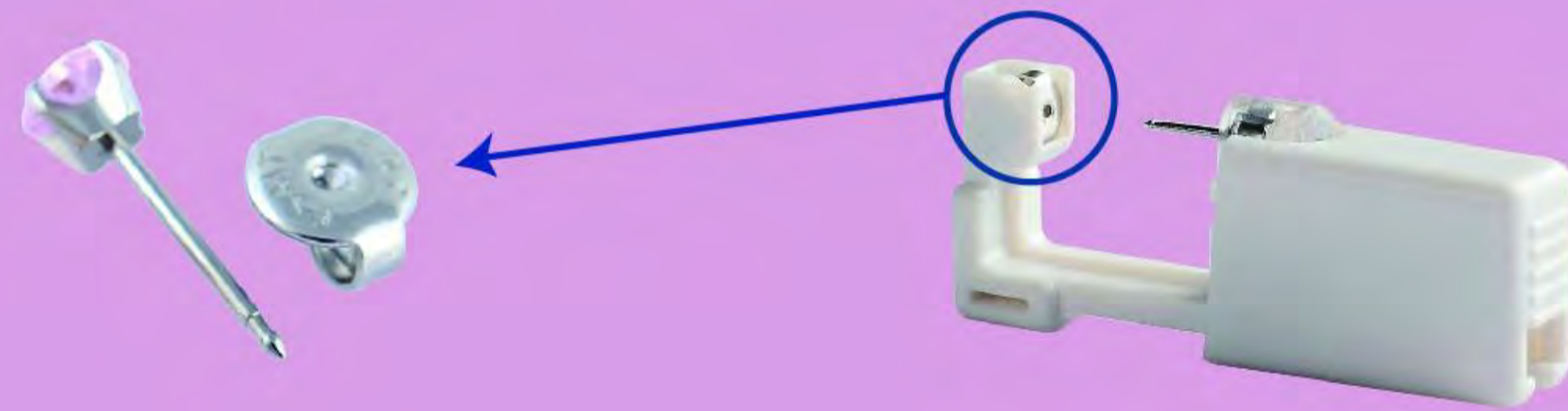
box of three pairs



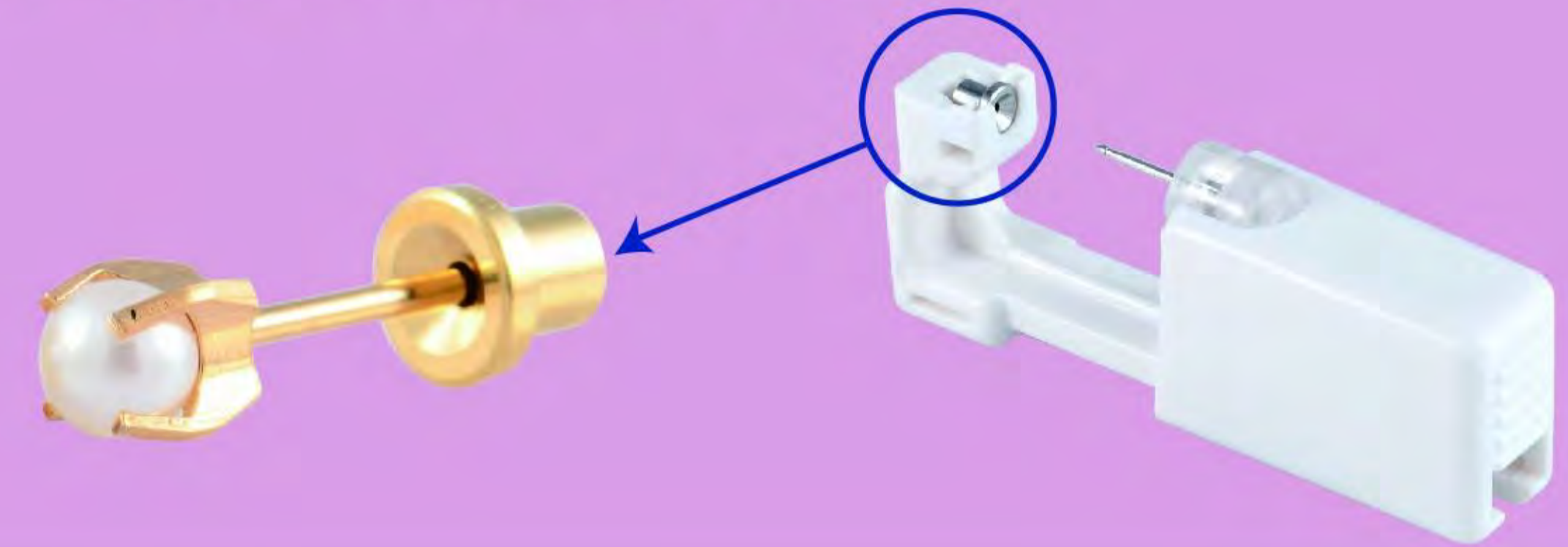
luxury twin card

● 5 options of Cartridge

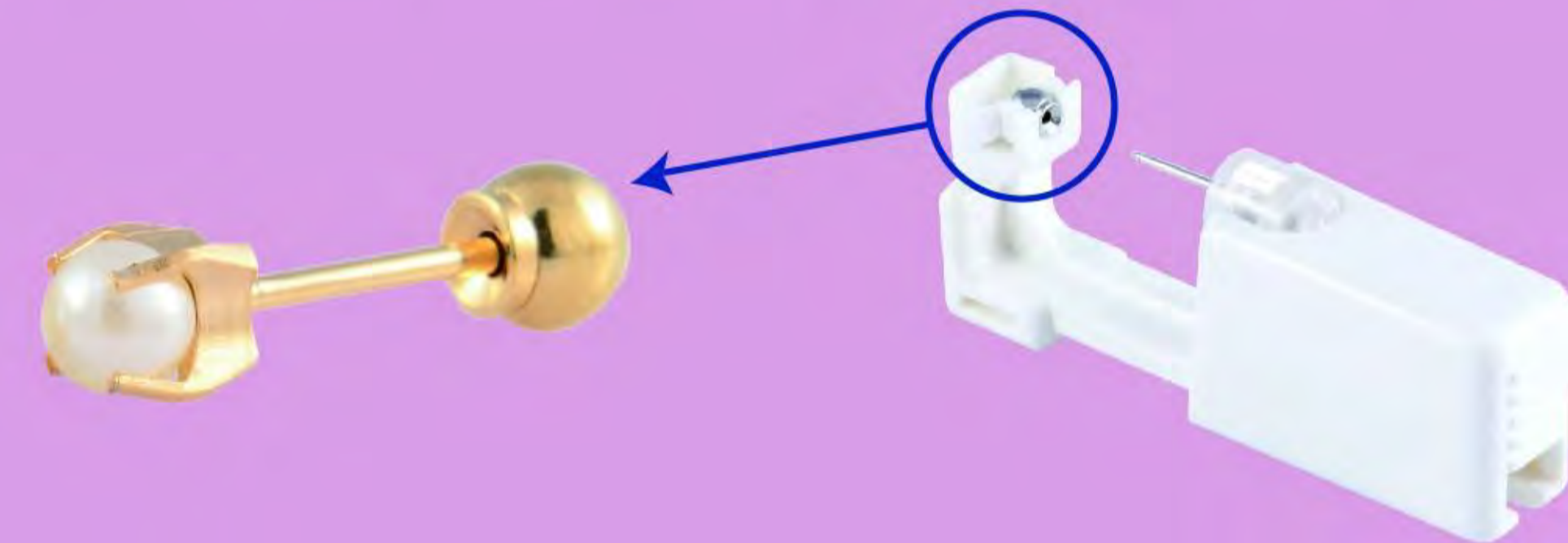
M1, Use original Butterfly clutch



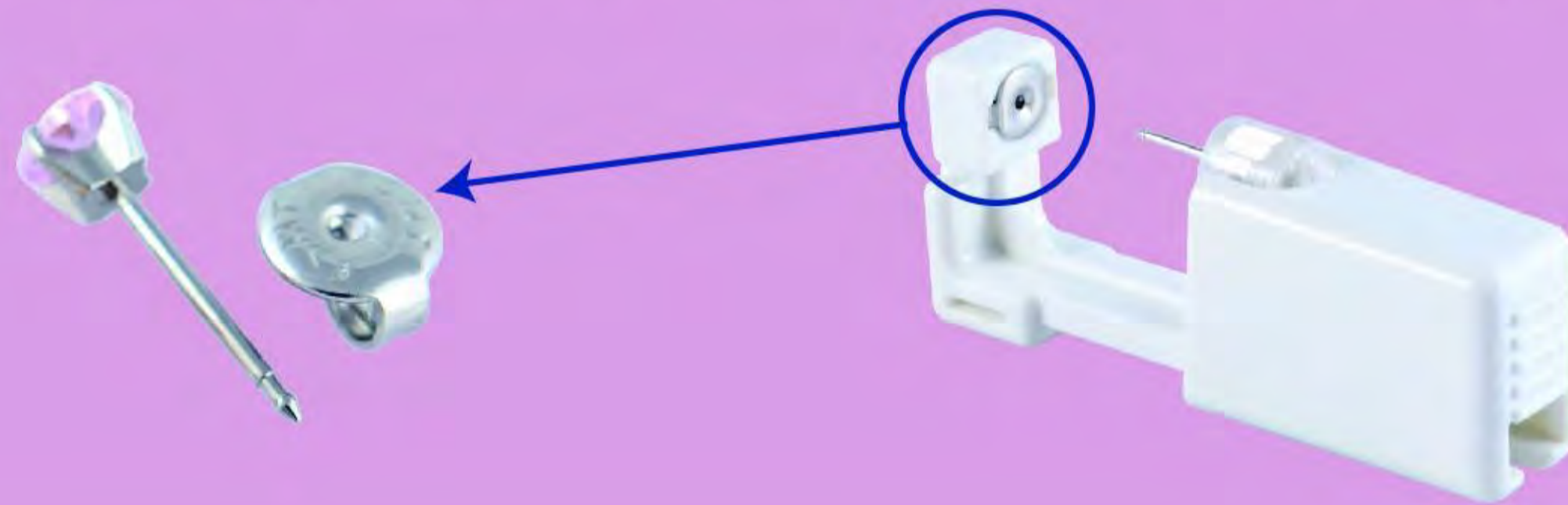
M3, Use hat nut, Safer



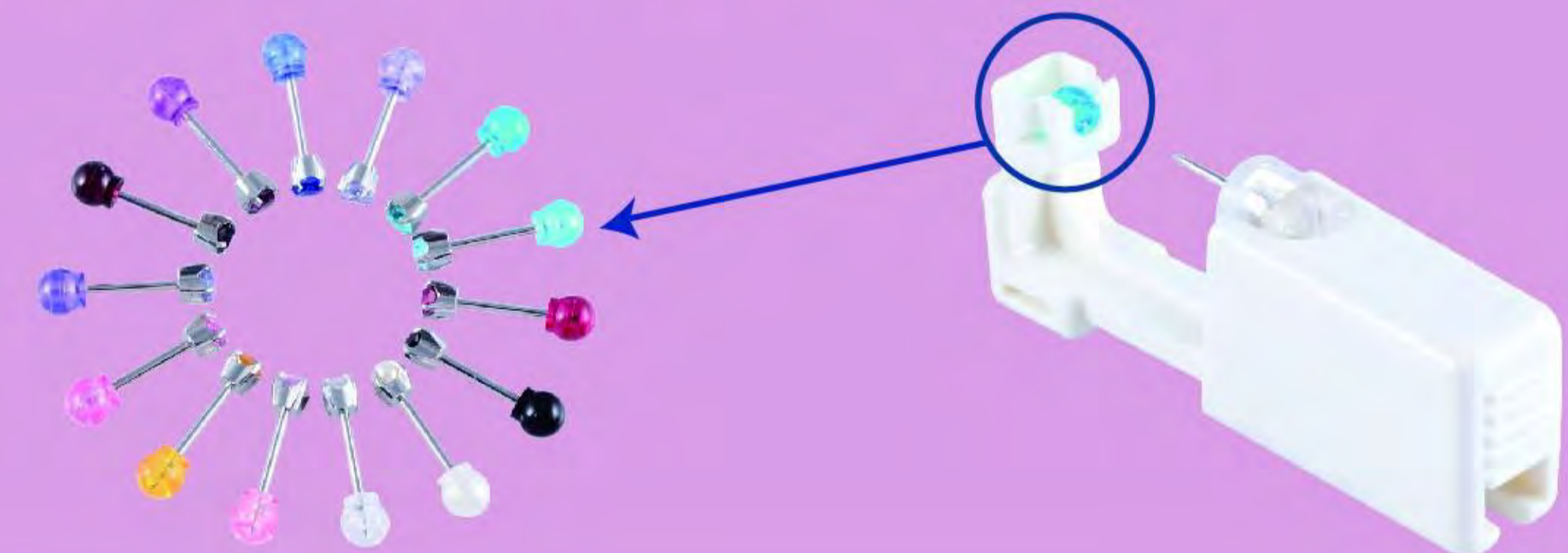
M4, Use ball nut, Safer and cool



M2, Upgraded M1, Use butterfly clutch, But easy to drop out of cartridge after operation



M5, Use colorful ball nut



21/22-3** Bezel Birthstone, Regular Crystal

4mm



21-301

S/S,4mm head,
3mm crystal,
January/Garnet



21-302

S/S,4mm head,
3mm crystal,
February/Amethyst



21-303

S/S,4mm head,
3mm crystal,
March/Aquamarine



21-304

S/S,4mm head,
3mm crystal,
April/Clear



21-305

S/S,4mm head,
3mm crystal,
May/Emerald



21-306

S/S,4mm head,
3mm crystal,
June/Tanzanite



21-307

S/S,4mm head,
3mm crystal,
July/Ruby



21-308

S/S,4mm head,
3mm crystal,
August/Peridot



21-309

S/S,4mm head,
3mm crystal,
September/Sapphire



21-310

S/S,4mm head,
3mm crystal,
October/Rose



21-311

S/S,4mm head,
3mm crystal,
November/Topaz



21-312

S/S,4mm head,
3mm crystal,
December/Blue Zircon



21-313

S/S,4mm head,
3mm crystal,
Jet



21-314

S/S,4mm head,
3mm crystal,
Crystal AB



22-301

G/P,4mm head,
3mm crystal,
January/Garnet



22-302

G/P,4mm head,
3mm crystal,
February/Amethyst



22-303

G/P,4mm head,
3mm crystal,
March/Aquamarine



22-304

G/P,4mm head,
3mm crystal,
April/Clear



22-305

G/P,4mm head,
3mm crystal,
May/Emerald



22-306

G/P,4mm head,
3mm crystal,
June/Tanzanite



22-307

G/P,4mm head,
3mm crystal,
July/Ruby



22-308

G/P,4mm head,
3mm crystal,
August/Peridot



22-309

G/P,4mm head,
3mm crystal,
September/Sapphire



22-310

G/P,4mm head,
3mm crystal,
October/Rose



22-311

G/P,4mm head,
3mm crystal,
November/Topaz



22-312

G/P,4mm head,
3mm crystal,
December/Blue Zircon



22-313

G/P,4mm head,
3mm crystal,
Jet



22-314

G/P,4mm head,
3mm crystal,
Crystal AB

21/22-2** Bezel Birthstone, Mini Crystal

3mm



21-201

S/S,3mm head,
2mm crystal,
January/Garnet



21-202

S/S,3mm head,
2mm crystal,
February/Amethyst



21-203

S/S,3mm head,
2mm crystal,
March/Aquamarine



21-204

S/S,3mm head,
2mm crystal,
April/Clear



21-205

S/S,3mm head,
2mm crystal,
May/Emerald



21-206

S/S,3mm head,
2mm crystal,
June/Tanzanite



21-207

S/S,3mm head,
2mm crystal,
July/Ruby



21-208

S/S,3mm head,
2mm crystal,
August/Peridot



21-209

S/S,3mm head,
2mm crystal,
September/Sapphire



21-210

S/S,3mm head,
2mm crystal,
October/Rose



21-211

S/S,3mm head,
2mm crystal,
November/Topaz



21-212

S/S,3mm head,
2mm crystal,
December/Blue Zircon



21-213

S/S,3mm head,
2mm crystal,
Jet



21-214

S/S,3mm head,
2mm crystal,
Crystal AB



22-201

G/P,3mm head,
2mm crystal,
January/Garnet



22-202

G/P,3mm head,
2mm crystal,
February/Amethyst



22-203

G/P,3mm head,
2mm crystal,
March/Aquamarine



22-204

G/P,3mm head,
2mm crystal,
April/Clear



22-205

G/P,3mm head,
2mm crystal,
May/Emerald



22-206

G/P,3mm head,
2mm crystal,
June/Tanzanite



22-207

G/P,3mm head,
2mm crystal,
July/Ruby



22-208

G/P,3mm head,
2mm crystal,
August/Peridot



22-209

G/P,3mm head,
2mm crystal,
September/Sapphire



22-210

G/P,3mm head,
2mm crystal,
October/Rose



22-211

G/P,3mm head,
2mm crystal,
November/Topaz



22-212

G/P,3mm head,
2mm crystal,
December/Blue Zircon



22-213

G/P,3mm head,
2mm crystal,
Jet



22-214

G/P,3mm head,
2mm crystal,
Crystal AB

23/24-2** Shapes

*Real stud sizes may not be as shown on the page, please check the size number

5mm



23-580

S/S,5mm Button,
Black



23-582

S/S,5mm Button,
Skeleton



23-583

S/S,5mm Button,
YinYang



23-584

S/S,5mm Button,
Beetle



23-586

S/S,5mm Button,
Elephant



23-587

S/S,5mm Button,
Daisy



23-588

S/S,5mm Button,
Rabbit



23-589

S/S,5mm Button,
Dolphin

6mm



23-681

S/S,6mm Button,
Lunar eclipse



23-682

S/S,6mm Button,
Skeleton



23-683

S/S,6mm Button,
YinYang



23-684

S/S,6mm Button,
Beetle



23-685

S/S,6mm Button,
Smile

25/26-1** New Bezel, Micro Crystal

2mm



25-103

S/S,2mm head,
1.6mm crystal,
Aquamarine



25-104

S/S,2mm head,
1.6mm crystal,
Clear



25-110

S/S,2mm head,
1.6mm crystal,
Rose



26-103

G/P,2mm head,
1.6mm crystal,
Aquamarine



26-104

G/P,2mm head,
1.6mm crystal,
Clear



26-110

G/P,2mm head,
1.6mm crystal,
Rose



23/24-2** Shapes

*Real stud sizes may not be as shown on the page, please check the size number

3mm



23-300

S/S, 3mm Ball



23-351

S/S, 3mm Fullmoon



24-300

G/P, 3mm Ball



24-351

G/P, 3mm Fullmoon



24-313

S/S, 3mm Ball
Black plating



24-355

G/P, 3mm Ball
Rose gold plating

4mm



23-400

S/S, 4mm
Fullmoon



23-450

S/S, 4mm Star



23-451

S/S, 4mm Ball



23-454

S/S, 4mm Star,
1.6mm crystal Clear



23-464

S/S, 4mm Heart,
1.6mm crystal Clear



23-465

S/S, 4mm Clover



24-400

G/P, 4mm
Fullmoon



24-450

G/P, 4mm Star



24-451

G/P, 4mm Ball



24-454

G/P, 4mm Star,
1.6mm crystal Clear



24-464

G/P, 4mm Heart,
1.6mm crystal Clear



24-465

G/P, 4mm Clover

25/26-3** New Bezel, Regular Crystal

4mm



25-301

S/S,4mm head,
3mm crystal,
Garnet



25-302

S/S,4mm head,
3mm crystal,
Amethyst



25-303

S/S,4mm head,
3mm crystal,
Aquamarine



25-304

S/S,4mm head,
3mm crystal,
Clear



25-305

S/S,4mm head,
3mm crystal,
Emerald



25-306

S/S,4mm head,
3mm crystal,
Tanzanite



25-307

S/S,4mm head,
3mm crystal,
Ruby



25-308

S/S,4mm head,
3mm crystal,
Peridot



25-309

S/S,4mm head,
3mm crystal,
Sapphire



25-310

S/S,4mm head,
3mm crystal,
Rose



25-311

S/S,4mm head,
3mm crystal,
Topaz



25-312

S/S,4mm head,
3mm crystal,
Blue Zircon



25-313

S/S,4mm head,
3mm crystal,
Jet



25-314

S/S,4mm head,
3mm crystal,
Crystal AB



26-301

G/P,4mm head,
3mm crystal,
Garnet



26-302

G/P,4mm head,
3mm crystal,
Amethyst



26-303

G/P,4mm head,
3mm crystal,
Aquamarine



26-304

G/P,4mm head,
3mm crystal,
Clear



26-305

G/P,4mm head,
3mm crystal,
Emerald



26-306

G/P,4mm head,
3mm crystal,
Tanzanite



26-307

G/P,4mm head,
3mm crystal,
Ruby



26-308

G/P,4mm head,
3mm crystal,
Peridot



26-309

G/P,4mm head,
3mm crystal,
Sapphire



26-310

G/P,4mm head,
3mm crystal,
Rose



26-311

G/P,4mm head,
3mm crystal,
Topaz



26-312

G/P,4mm head,
3mm crystal,
Blue Zircon



26-313

G/P,4mm head,
3mm crystal,
Jet



26-314

G/P,4mm head,
3mm crystal,
Crystal AB

*Real stud sizes may not be as shown on the page, please check the size number

25/26-2** New Bezel, Mini Crystal

3mm



25-201

S/S,3mm head,
2mm crystal,
Garnet



25-202

S/S,3mm head,
2mm crystal,
Amethyst



25-203

S/S,3mm head,
2mm crystal,
Aquamarine



25-204

S/S,3mm head,
2mm crystal,
Clear



25-205

S/S,3mm head,
2mm crystal,
Emerald



25-206

S/S,3mm head,
2mm crystal,
Tanzanite



25-207

S/S,3mm head,
2mm crystal,
Ruby



25-208

S/S,3mm head,
2mm crystal,
Peridot



25-209

S/S,3mm head,
2mm crystal,
Sapphire



25-210

S/S,3mm head,
2mm crystal,
Rose



25-211

S/S,3mm head,
2mm crystal,
Topaz



25-212

S/S,3mm head,
2mm crystal,
Blue Zircon



25-213

S/S,3mm head,
2mm crystal,
Jet



25-214

S/S,3mm head,
2mm crystal,
Crystal AB



26-201

G/P,3mm head,
2mm crystal,
Garnet



26-202

G/P,3mm head,
2mm crystal,
Amethyst



26-203

G/P,3mm head,
2mm crystal,
Aquamarine



26-204

G/P,3mm head,
2mm crystal,
Clear



26-205

G/P,3mm head,
2mm crystal,
Emerald



26-206

G/P,3mm head,
2mm crystal,
Tanzanite



26-207

G/P,3mm head,
2mm crystal,
Ruby



26-208

G/P,3mm head,
2mm crystal,
Peridot



26-209

G/P,3mm head,
2mm crystal,
Sapphire



26-210

G/P,3mm head,
2mm crystal,
Rose



26-211

G/P,3mm head,
2mm crystal,
Topaz



26-212

G/P,3mm head,
2mm crystal,
Blue Zircon



26-213

G/P,3mm head,
2mm crystal,
Jet



26-214

G/P,3mm head,
2mm crystal,
Crystal AB

31/32-4** Tiffany, Crystal More colors, Less shining than Cubic Zirconia

4mm



31-401

S/S, 4mm crystal,
January/Garnet



31-402

S/S, 4mm crystal,
February/Amethyst



31-403

S/S, 4mm crystal,
March/Aquamarine



31-404

S/S, 4mm crystal,
April/Clear



31-405

S/S, 4mm crystal,
May/Emerald



31-406

S/S, 4mm crystal,
June/Tanzanite



31-407

S/S, 4mm crystal,
July/Ruby



31-408

S/S, 4mm crystal,
August/Peridot



31-409

S/S, 4mm crystal,
September/Sapphire



31-410

S/S, 4mm crystal,
October/Rose



31-411

S/S, 4mm crystal,
November/Topaz



31-412

S/S, 4mm crystal,
December/Blue Zircon



31-413

S/S, 4mm crystal,
Jet



31-414

S/S, 4mm crystal,
Crystal AB



32-401

G/P, 4mm crystal,
January/Garnet



32-402

G/P, 4mm crystal,
February/Amethyst



32-403

G/P, 4mm crystal,
March/Aquamarine



32-404

G/P, 4mm crystal,
April/Clear



32-405

G/P, 4mm crystal,
May/Emerald



32-406

G/P, 4mm crystal,
June/Tanzanite



32-407

G/P, 4mm crystal,
July/Ruby



32-408

G/P, 4mm crystal,
August/Peridot



32-409

G/P, 4mm crystal,
September/Sapphire



32-410

G/P, 4mm crystal,
October/Rose



32-411

G/P, 4mm crystal,
November/Topaz



32-412

G/P, 4mm crystal,
December/Blue Zircon



32-413

G/P, 4mm crystal,
Jet



32-414

G/P, 4mm crystal,
Crystal AB

31/32-4** Prong setting ,Crystal More colors, Less shining than Cubic Zirconia **4mm**



31-401

S/S,4mm crystal,
January/Garnet



31-402

S/S,4mm crystal,
February/Amethyst



31-403

S/S,4mm crystal,
March/Aquamarine



31-404

S/S,4mm crystal,
April/Clear



31-405

S/S,4mm crystal,
May/Emerald



31-406

S/S,4mm crystal,
June/Tanzanite



31-407

S/S,4mm crystal,
July/Ruby



31-408

S/S,4mm crystal,
August/Peridot



31-409

S/S,4mm crystal,
September/Sapphire



31-410

S/S,4mm crystal,
October/Rose



31-411

S/S,4mm crystal,
November/Topaz



31-412

S/S,4mm crystal,
December/Blue Zircon



31-413

S/S,4mm crystal,
Jet



31-414

S/S,4mm crystal,
Crystal AB



32-401

G/P,4mm crystal,
January/Garnet



32-402

G/P,4mm crystal,
February/Amethyst



32-403

G/P,4mm crystal,
March/Aquamarine



32-404

G/P,4mm crystal,
April/Clear



32-405

G/P,4mm crystal,
May/Emerald



32-406

G/P,4mm crystal,
June/Tanzanite



32-407

G/P,4mm crystal,
July/Ruby



32-408

G/P,4mm crystal,
August/Peridot



32-409

G/P,4mm crystal,
September/Sapphire



32-410

G/P,4mm crystal,
October/Rose



32-411

G/P,4mm crystal,
November/Topaz



32-412

G/P,4mm crystal,
December/Blue Zircon



32-413

G/P,4mm crystal,
Jet



32-414

G/P,4mm crystal,
Crystal AB

*Real stud sizes may not be as shown on the page, please check the size number

31/32-2** Tiffany, Crystal More colors, Less shining than Cubic Zirconia 2mm



31-203

S/S,2mm crystal,
March/Aquamarine



31-204

S/S,2mm crystal,
April/Clear



31-210

S/S,2mm crystal,
October/Rose



32-203

G/P,2mm crystal,
March/Aquamarine



32-204

G/P,2mm crystal,
April/Clear



32-210

G/P,2mm crystal,
October/Rose

31/32-3** Tiffany, Crystal More colors, Less shining than Cubic Zirconia 3mm



31-301

S/S,3mm crystal,
January/Garnet



31-302

S/S,3mm crystal,
February/Amethyst



31-303

S/S,3mm crystal,
March/Aquamarine



31-304

S/S,3mm crystal,
April/Clear



31-305

S/S,3mm crystal,
May/Emerald



32-301

G/P,3mm crystal,
January/Garnet



32-302

G/P,3mm crystal,
February/Amethyst



32-303

G/P,3mm crystal,
March/Aquamarine



32-304

G/P,3mm crystal,
April/Clear



32-305

G/P,3mm crystal,
May/Emerald



31-306

S/S,3mm crystal,
June/Tanzanite



31-307

S/S,3mm crystal,
July/Ruby



31-308

S/S,3mm crystal,
August/Peridot



31-309

S/S,3mm crystal,
September/Sapphire



31-310

S/S,3mm crystal,
October/Rose



32-306

G/P,3mm crystal,
June/Tanzanite



32-307

G/P,3mm crystal,
July/Ruby



32-308

G/P,3mm crystal,
August/Peridot



32-309

G/P,3mm crystal,
September/Sapphire



32-310

G/P,3mm crystal,
October/Rose



31-311

S/S,3mm crystal,
November/Topaz



31-312

S/S,3mm crystal,
December/Blue Zircon



31-313

S/S,3mm crystal,
Jet



31-314

S/S,3mm crystal,
Crystal AB



32-311

G/P,3mm crystal,
November/Topaz



32-312

G/P,3mm crystal,
December/Blue Zircon



32-313

G/P,3mm crystal,
Jet



32-314

G/P,3mm crystal,
Crystal AB

*Real stud sizes may not be as shown on the page, please check the size number

31/32-2** Prong setting , Crystal More colors, Less shining than Cubic Zirconia 2mm



31-203

S/S,2mm crystal,
March/Aquamarine



31-204

S/S,2mm crystal,
April/Clear



31-210

S/S,2mm crystal,
October/Rose



32-203

G/P,2mm crystal,
March/Aquamarine



32-204

G/P,2mm crystal,
April/Clear



32-210

G/P,2mm crystal,
October/Rose

31/32-3** Tiffany, Crystal More colors, Less shining than Cubic Zirconia 3mm



31-301

S/S,3mm crystal,
January/Garnet



31-302

S/S,3mm crystal,
February/Amethyst



31-303

S/S,3mm crystal,
March/Aquamarine



31-304

S/S,3mm crystal,
April/Clear



31-305

S/S,3mm crystal,
May/Emerald



32-301

G/P,3mm crystal,
January/Garnet



32-302

G/P,3mm crystal,
February/Amethyst



32-303

G/P,3mm crystal,
March/Aquamarine



32-304

G/P,3mm crystal,
April/Clear



32-305

G/P,3mm crystal,
May/Emerald



31-306

S/S,3mm crystal,
June/Tanzanite



31-307

S/S,3mm crystal,
July/Ruby



31-308

S/S,3mm crystal,
August/Peridot



31-309

S/S,3mm crystal,
September/Sapphire



31-310

S/S,3mm crystal,
October/Rose



32-306

G/P,3mm crystal,
June/Tanzanite



32-307

G/P,3mm crystal,
July/Ruby



32-308

G/P,3mm crystal,
August/Peridot



32-309

G/P,3mm crystal,
September/Sapphire



32-310

G/P,3mm crystal,
October/Rose



31-311

S/S,3mm crystal,
November/Topaz



31-312

S/S,3mm crystal,
December/Blue Zircon



31-313

S/S,3mm crystal,
Jet



31-314

S/S,3mm crystal,
Crystal AB



32-311

G/P,3mm crystal,
November/Topaz



32-312

G/P,3mm crystal,
December/Blue Zircon



32-313

G/P,3mm crystal,
Jet



32-314

G/P,3mm crystal,
Crystal AB

*Real stud sizes may not be as shown on the page, please check the size number

35/36-*** Tiffany, Princess Cut

3*3mm



35-304

S/S,3x3mm,
CZ Princess Cut,
Clear



35-315

S/S,3x3mm,
CZ Princess Cut,
Pink



36-304

G/P,3x3mm,
CZ Princess Cut,
Clear



36-315

G/P,3x3mm,
CZ Princess Cut,
Pink

4*4mm



35-404

S/S,4x4mm,
CZ Princess Cut,
Clear



35-415

S/S,4x4mm,
CZ Princess Cut,
Pink



35-403

S/S,4x4mm,
Crystal Princess Cut,
Aquamarine



35-407

S/S,4x4mm,
Crystal Princess Cut,
Ruby



35-409

S/S,4x4mm,
Crystal Princess Cut,
Sapphire



36-404

G/P,4x4mm,
CZ Princess Cut,
Clear



36-415

G/P,4x4mm,
CZ Princess Cut,
Pink



36-403

G/P,4x4mm,
Crystal Princess Cut,
Aquamarine



36-407

G/P,4x4mm,
Crystal Princess Cut,
Ruby



36-409

G/P,4x4mm,
Crystal Princess Cut,
Sapphire

61/62-*** Tiffany 6 Claws, Cubic Zirconia (CZ)

5mm



61-504

S/S,5mm CZ,
Clear



61-513

S/S,5mm CZ,
Black



61-515

S/S,5mm CZ,
Pink



61-516

S/S,5mm CZ,
Lavender



61-517

S/S,5mm CZ,
Violet



61-520

S/S,5mm CZ,
Apple Green



62-504

G/P,5mm CZ,
Clear



62-513

G/P,5mm CZ,
Black



62-515

G/P,5mm CZ,
Pink



62-516

G/P,5mm CZ,
Lavender



62-517

G/P,5mm CZ,
Violet



62-520

G/P,5mm CZ,
Apple Green

*Real stud sizes may not be as shown on the page, please check the size number

35/36-*** Prong setting , Princess Cut

3*3mm



35-304

S/S,3x3mm,
CZ Princess Cut,
Clear



35-315

S/S,3x3mm,
CZ Princess Cut,
Pink



36-304

G/P,3x3mm,
CZ Princess Cut,
Clear



36-315

G/P,3x3mm,
CZ Princess Cut,
Pink

4*4mm



35-404

S/S,4x4mm,
CZ Princess Cut,
Clear



35-415

S/S,4x4mm,
CZ Princess Cut,
Pink



35-403

S/S,4x4mm,
Crystal Princess Cut,
Aquamarine



35-407

S/S,4x4mm,
Crystal Princess Cut,
Ruby



35-409

S/S,4x4mm,
Crystal Princess Cut,
Sapphire



36-404

G/P,4x4mm,
CZ Princess Cut,
Clear



36-415

G/P,4x4mm,
CZ Princess Cut,
Pink



36-403

G/P,4x4mm,
Crystal Princess Cut,
Aquamarine



36-407

G/P,4x4mm,
Crystal Princess Cut,
Ruby



36-409

G/P,4x4mm,
Crystal Princess Cut,
Sapphire

61/62-*** Claw setting , Cubic Zirconia (CZ)

5mm



61-504

S/S,5mm CZ,
Clear



61-513

S/S,5mm CZ,
Black



61-515

S/S,5mm CZ,
Pink



61-516

S/S,5mm CZ,
Lavender



61-517

S/S,5mm CZ,
Violet



61-520

S/S,5mm CZ,
Apple Green



62-504

G/P,5mm CZ,
Clear



62-513

G/P,5mm CZ,
Black



62-515

G/P,5mm CZ,
Pink



62-516

G/P,5mm CZ,
Lavender



62-517

G/P,5mm CZ,
Violet



62-520

G/P,5mm CZ,
Apple Green

*Real stud sizes may not be as shown on the page, please check the size number

33/34-*** Tiffany,Cubic Zirconia (CZ)

2mm



33-204

S/S,2mm CZ,
Clear



33-215

S/S,2mm CZ,
Pink



34-204

G/P,2mm CZ,
Clear



34-215

G/P,2mm CZ,
Pink

3mm



33-304

S/S,3mm CZ,
Clear



33-315

S/S,3mm CZ,
Pink



33-316

S/S,3mm CZ,
Lavender



34-304

G/P,3mm CZ,
Clear



34-315

G/P,3mm CZ,
Pink



34-316

G/P,3mm CZ,
Lavender

4mm



33-404

S/S,4mm CZ,
Clear



33-415

S/S,4mm CZ,
Pink



33-416

S/S,4mm CZ,
Lavender



33-418

S/S,4mm CZ,
Black



34-404

G/P,4mm CZ,
Clear



34-415

G/P,4mm CZ,
Pink



34-416

G/P,4mm CZ,
Lavender



34-418

G/P,4mm CZ,
Black

5mm



33-504

S/S,5mm CZ
Star, Clear



33-515

S/S,5mm CZ
Star, Pink



34-504

G/P,5mm CZ
Star, Clear



34-515

G/P,5mm CZ
Star, Pink

*Real stud sizes may not be as shown on the page, please check the size number

33/34-***Prong setting,Cubic Zirconia (CZ)

2mm



33-204

S/S,2mm CZ,
Clear



33-215

S/S,2mm CZ,
Pink



34-204

G/P,2mm CZ,
Clear



34-215

G/P,2mm CZ,
Pink

3mm



33-304

S/S,3mm CZ,
Clear



33-315

S/S,3mm CZ,
Pink



33-316

S/S,3mm CZ,
Lavender



34-304

G/P,3mm CZ,
Clear



34-315

G/P,3mm CZ,
Pink



34-316

G/P,3mm CZ,
Lavender

4mm



33-404

S/S,4mm CZ,
Clear



33-415

S/S,4mm CZ,
Pink



33-416

S/S,4mm CZ,
Lavender



33-418

S/S,4mm CZ,
Black



34-404

G/P,4mm CZ,
Clear



34-415

G/P,4mm CZ,
Pink



34-416

G/P,4mm CZ,
Lavender



34-418

G/P,4mm CZ,
Black

5mm



33-504

S/S,5mm CZ
Star, Clear



33-515

S/S,5mm CZ
Star, Pink



34-504

G/P,5mm CZ
Star, Clear



34-515

G/P,5mm CZ
Star, Pink

*Real stud sizes may not be as shown on the page, please check the size number

Pearl

1.5mm



38-219

G/P,1.5mm Pearl

2.5mm



38-319

G/P,2.5mm Pearl

3.5mm



38-419

G/P,3.5mm Pearl

3mm



22-219

G/P,3mm head
2mm Pearl

4mm



22-319

G/P,4mm head
3mm Pearl

3mm



25-219

S/S,3mm head
2mm Pearl



26-219

G/P,3mm head
2mm Pearl

4mm



25-319

S/S,4mm head
3mm Pearl



26-319

G/P,4mm head
3mm Pearl



*Real stud sizes may not be as shown on the page, please check the size number

6mm 51/52-*** Daisies



51-661

S/S, 6mm daisy,
Rainbow



51-662

S/S, 6mm daisy,
Crystal Clear



51-663

S/S, 6mm daisy,
Rose+Crystal AB



51-664

S/S, 6mm daisy,
Crystal AB+Rose



51-665

S/S, 6mm daisy,
Sapphire+Crystal Clear



51-666

S/S, 6mm daisy,
Ruby+Crystal Clear



51-667

S/S, 6mm daisy,
Fuchsia+Light Rose



51-668

S/S, 6mm daisy,
Sapphire+Light Sapphire



51-669

S/S, 6mm daisy,
Crystal Clear+Rose



51-670

S/S, 6mm daisy,
Crystal AB+Sapphire



51-671

S/S, 6mm daisy,
Crystal Clear+Ruby



51-672

S/S, 6mm daisy,
Crystal Clear+Aquamarine



51-673

S/S, 6mm daisy,
Crystal Clear+Sapphire



52-661

G/P, 6mm daisy,
Rainbow



52-662

G/P, 6mm daisy,
Crystal Clear



52-663

G/P, 6mm daisy,
Rose+Crystal AB



52-664

G/P, 6mm daisy,
Crystal AB+Rose



52-665

G/P, 6mm daisy,
Sapphire+Crystal Clear



52-666

G/P, 6mm daisy,
Ruby+Crystal Clear



52-667

G/P, 6mm daisy,
Fuchsia+Light Rose



52-668

G/P, 6mm daisy,
Sapphire+Light Sapphire



52-669

G/P, 6mm daisy,
Crystal Clear+Rose



52-670

G/P, 6mm daisy,
Crystal AB+Sapphire



52-671

G/P, 6mm daisy,
Crystal Clear+Ruby



52-672

G/P, 6mm daisy,
Crystal Clear+Aquamarine



52-673

G/P, 6mm daisy,
Crystal Clear+Sapphire

*Real stud sizes may not be as shown on the page, please check the size number

81-*** Butterfly, Birthstone

6mm



81-601

S/S, Butterfly 6mm,
January/Garnet



81-602

S/S, Butterfly 6mm,
February/Amethyst



81-603

S/S, Butterfly 6mm,
March/Aquamarine



81-604

S/S, Butterfly 6mm,
April/Clear



81-605

S/S, Butterfly 6mm,
May/Emerald



81-606

S/S, Butterfly 6mm,
June/Tanzanite



81-607

S/S, Butterfly 6mm,
July/Ruby



81-608

S/S, Butterfly 6mm,
August/Peridot



81-609

S/S, Butterfly 6mm,
September/Sapphire



81-610

S/S, Butterfly 6mm,
October/Rose



81-611

S/S, Butterfly 6mm,
November/Topaz



81-612

S/S, Butterfly 6mm,
December/Blue Zircon

*Real stud sizes may not be as shown on the page, please check the size number

71-*** Titanium, Ball, Bezel Birthstone

Medical class implant Titanium Alloy

3mm



71-300
Titanium,
3mm ball, Pale



71-371
Titanium,
3mm ball, Blue



71-372
Titanium,
3mm ball, Purple

3mm



71-201
Ti, 3mm head,
2mm crystal,
January/Garnet



71-202
Ti, 3mm head,
2mm crystal,
February/Amethyst



71-203
Ti, 3mm head,
2mm crystal,
March/Aquamarine



71-204
Ti, 3mm head,
2mm crystal,
April/Clear



71-205
Ti, 3mm head,
2mm crystal,
May/Emerald



71-206
Ti, 3mm head,
2mm crystal,
June/Tanzanite



71-207
Ti, 3mm head,
2mm crystal,
July/Ruby



71-208
Ti, 3mm head,
2mm crystal,
August/Peridot



71-209
Ti, 3mm head,
2mm crystal,
September/Sapphire



71-210
Ti, 3mm head,
2mm crystal,
October/Rose



71-211
Ti, 3mm head,
2mm crystal,
November/Topaz



71-212
Ti, 3mm head,
2mm crystal,
December/Blue Zircon



71-213
Ti, 3mm head,
2mm crystal,
Jet



71-214
Ti, 3mm head,
2mm crystal,
Crystal AB

4mm



71-301
Ti, 4mm head,
3mm crystal,
January/Garnet



71-302
Ti, 4mm head,
3mm crystal,
February/Amethyst



71-303
Ti, 4mm head,
3mm crystal,
March/Aquamarine



71-304
Ti, 4mm head,
3mm crystal,
April/Clear



71-305
Ti, 4mm head,
3mm crystal,
May/Emerald



71-306
Ti, 4mm head,
3mm crystal,
June/Tanzanite



71-307
Ti, 4mm head,
3mm crystal,
July/Ruby



71-308
Ti, 4mm head,
3mm crystal,
August/Peridot



71-309
Ti, 4mm head,
3mm crystal,
September/Sapphire



71-310
Ti, 4mm head,
3mm crystal,
October/Rose



71-311
Ti, 4mm head,
3mm crystal,
November/Topaz



71-312
Ti, 4mm head,
3mm crystal,
December/Blue Zircon



71-313
Ti, 4mm head,
3mm crystal,
Jet



71-314
Ti, 4mm head,
3mm crystal,
Crystal AB

*Real stud sizes may not be as shown on the page, please check the size number

25/26-2**C New Bezel, Mini, Color Ball Nut



25-201C

S/S, 3mm head,
2mm crystal,
Garnet



25-202C

S/S, 3mm head,
2mm crystal,
Amethyst



25-203C

S/S, 3mm head,
2mm crystal,
Aquamarine



25-204C

S/S, 3mm head,
2mm crystal,
Clear



25-205C

S/S, 3mm head,
2mm crystal,
Emerald



25-206C

S/S, 3mm head,
2mm crystal,
Tanzanite



25-207C

S/S, 3mm head,
2mm crystal,
Ruby



25-208C

S/S, 3mm head,
2mm crystal,
Peridot



25-209C

S/S, 3mm head,
2mm crystal,
Sapphire



25-210C

S/S, 3mm head,
2mm crystal,
Rose



25-211C

S/S, 3mm head,
2mm crystal,
Topaz



25-212C

S/S, 3mm head,
2mm crystal,
Blue Zircon



25-213C

S/S, 3mm head,
2mm crystal,
Jet



25-219C

S/S, 3mm head,
2mm crystal,
Pearl



26-201C

G/P, 3mm head,
2mm crystal,
Garnet



26-202C

G/P, 3mm head,
2mm crystal,
Amethyst



26-203C

G/P, 3mm head,
2mm crystal,
Aquamarine



26-204C

G/P, 3mm head,
2mm crystal,
Clear



26-205C

G/P, 3mm head,
2mm crystal,
Emerald



26-206C

G/P, 3mm head,
2mm crystal,
Tanzanite



26-207C

G/P, 3mm head,
2mm crystal,
Ruby



26-208C

G/P, 3mm head,
2mm crystal,
Peridot



26-209C

G/P, 3mm head,
2mm crystal,
Sapphire



26-210C

G/P, 3mm head,
2mm crystal,
Rose



26-211C

G/P, 3mm head,
2mm crystal,
Topaz



26-212C

G/P, 3mm head,
2mm crystal,
Blue Zircon



26-213C

G/P, 3mm head,
2mm crystal,
Jet



26-219C

G/P, 3mm head,
2mm crystal,
Pearl

*Real stud sizes may not be as shown on the page, please check the size number

Long Post for Auricle and thick lobe, Studs No. Start with L



L23-451B

S/S, 4mm Ball



L24-451B

G/P, 4mm Ball

Short Post for baby, Hat Nut.



S23-300H

S/S, 3mm ball



S25-203H

S/S, 3mm head
2mm crystal
Aquamarine



S25-204H

S/S, 3mm head
2mm crystal
Clear



S25-210H

S/S, 3mm head
2mm crystal
Rose



S53-404H

S/S, 4mm ringbutton
Clear



S53-415H

S/S, 4mm ringbutton
Pink



S24-300H

G/P, 3mm ball



S26-203H

G/P, 3mm head
2mm crystal
Aquamarine



S26-204H

G/P, 3mm head
2mm crystal
Clear



S26-210H

G/P, 3mm head
2mm crystal
Rose



S54-404H

G/P, 4mm ringbutton
Clear



S54-415H

G/P, 4mm ringbutton
Pink

K4-*** 14K Gold

*Real stud sizes may not be as shown on the page, please check the size number

2mm



K4-204

14K Gold, 2mm CZ,
Clear



K4-215

14K Gold, 2mm CZ,
Pink

4mm



K4-404

14K Gold, 4mm CZ
Princess Cut, Clear



K4-415

14K Gold, 4mm CZ
Princess Cut, Pink

6mm



K4-661

14K Gold, 6mm daisy,
Rainbow



K4-662

14K Gold, 6mm daisy,
Crystal Clear



K4-669

14K Gold, 6mm daisy,
Crystal Clear+Rose

3mm



K4-301

14K Gold
3mm crystal
January
Garnet



K4-302

14K Gold
3mm crystal
February
Amethyst



K4-303

14K Gold
3mm crystal
March
Aquamarine



K4-304

14K Gold
3mm crystal
April
Clear



K4-305

14K Gold
3mm crystal
May
Emerald



K4-306

14K Gold
3mm crystal
June
Tanzanite



K4-307

14K Gold
3mm crystal
July
Ruby



K4-308

14K Gold
3mm crystal
August
Peridot



K4-309

14K Gold
3mm crystal
September
Sapphire



K4-310

14K Gold
3mm crystal
October
Rose



K4-311

14K Gold
3mm crystal
November
Topaz



K4-312

14K Gold
3mm crystal
December
Blue Zircon

*Real stud sizes may not be as shown on the page, please check the size number

Color Barbell



23P-401C
Plastic, 4mm
Garnet



23P-402C
Plastic, 4mm
Amethyst



23P-403C
Plastic, 4mm
Aquamarine



23P-404C
Plastic, 4mm
Clear



23P-405C
Plastic, 4mm
Emerald



23P-406C
Plastic, 4mm
Tanzanite



23P-407C
Plastic, 4mm
Ruby



23P-408C
Plastic, 4mm
Peridot



23P-409C
Plastic, 4mm
Sapphire



23P-410C
Plastic, 4mm
Rose



23P-411C
Plastic, 4mm
Topaz



23P-412C
Plastic, 4mm
Blue Zircon



23P-413C
Plastic, 4mm
Jet



23P-415C
Plastic, 4mm
Pink



23P-416C
Plastic, 4mm
Lavender



23P-419C
Plastic, 4mm
Pearl

Sterile Sensitive Ear Studs (For wearing instead of piercing)



All piercing studs listed can be made Sensitive and Sterile for Wearing After Piercing,
With optional back (Butterfly, Hat, Ball, Color Ball)

(More sensitive studs only for wearing are coming soon)

*Real stud sizes may not be as shown on the page, please check the size number

17/18-2** Nose Piercing Other stone colors are available as wish

2mm



17-204

S/S, 2mm head,
1.6mm crystal
Clear



18-204

G/P, 2mm head,
1.6mm crystal
Clear

71/72-2** Nose piercing, Titanium

2mm



71-254

Titanium, 2mm head,
1.5mm crystal
Clear



72-254

Titanium(G/P), 2mm head,
1.5mm crystal
Clear

Helpful Tools



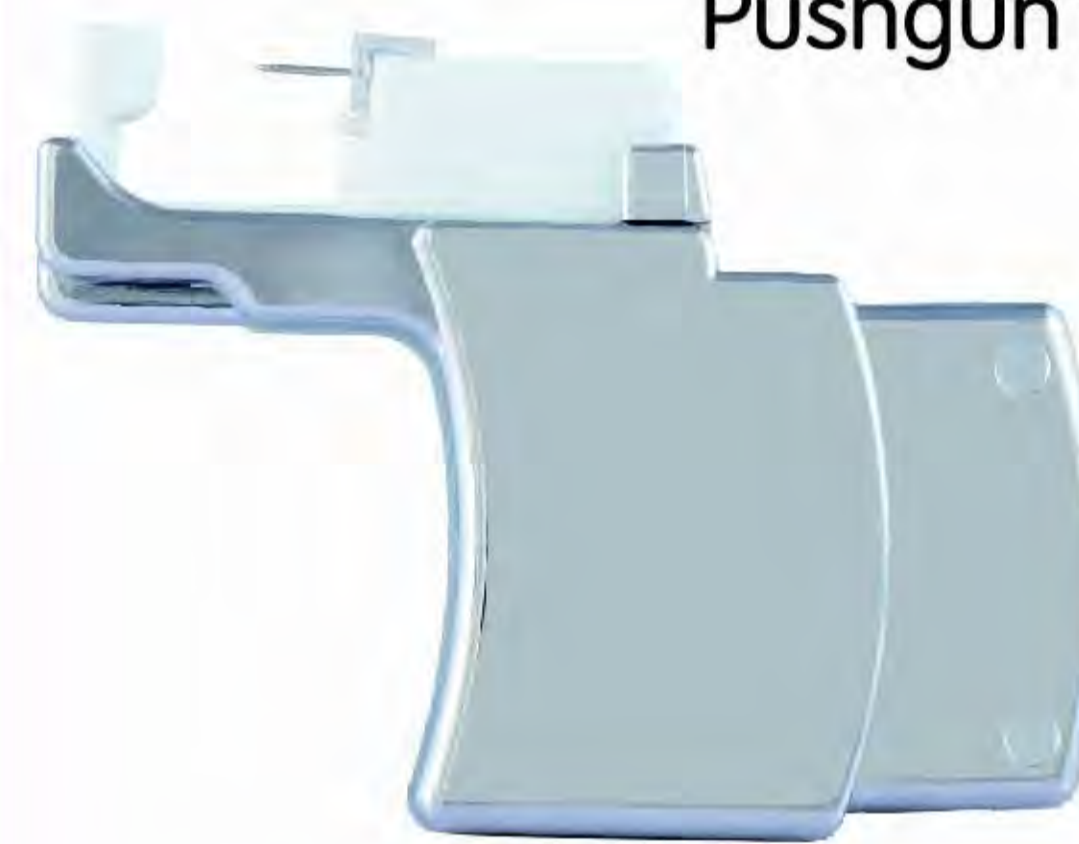
Acrylic Display Board:
OEM available



Buy one Get one Free:
buy each piercer get one Alcohol or BZK disinfection pad free. (Alcohol dry fast on skin but not suitable for air shipment, BZK solution dry slow but can be air shipped)



Medical class Skin Marker,
can mark before or
after the Alcohol disinfection



Pushgun for steady operation



Ear piercing Toolbox, OEM available, Including:

- Mirror,
- PushGun,
- Medical Skin Marker,
- Ear piercing Unit*2 for Practise



Acrylic Shop Display



Firstomato Medical Devices